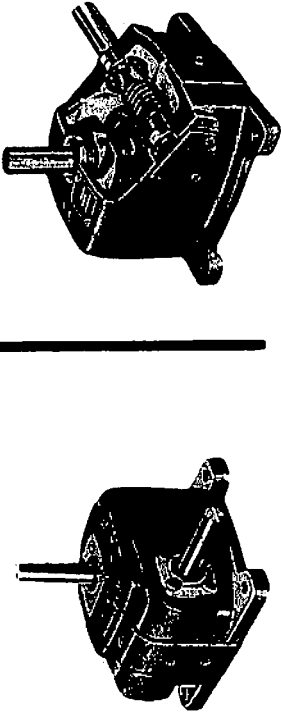
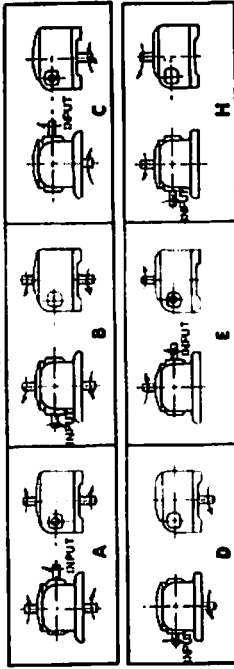


PL-1 STYLE

- SINGLE WORM GEAR REDUCTION
- VERTICAL RIGHT ANGLE DRIVE
- WEIGHT—38 lbs. (Approx.)—OIL CAP.—28 fl. ozs.



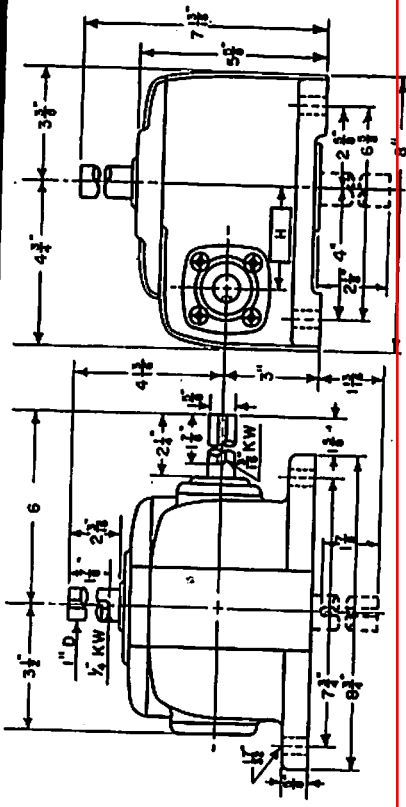
ASSEMBLIES



Shafts may be rotated in either direction—arrows merely indicate relative rotation. When ordering, specify assembly desired.

RATIO To 1	1800 R.P.M. (INPUT)				1200 R.P.M. (INPUT)				
	R.P.M. Output Shaft	Max. Input H.P.	Output H.P.	Output Torque In. Lbs.	R.P.M. Output Shaft	Max. Input H.P.	Output H.P.	Output Torque In. Lbs.	
5-1/6	354	2.750	2.4	440	600	2.62	2.375	2.04	548
10	180	1.375	1.2	220	300	1.312	1.187	1.02	274
15	120	0.917	0.8	147	200	0.875	0.8	0.68	182
20	90	0.688	0.6	110	150	0.656	0.6	0.51	137
25	72	0.550	0.48	88	120	0.525	0.48	0.408	109
30	60	0.450	0.4	73	100	0.425	0.4	0.336	91
40	45	0.338	0.3	55	75	0.319	0.3	0.252	68
50	36	0.270	0.24	44	60	0.256	0.24	0.196	54
60	30	0.225	0.2	37	50	0.213	0.2	0.163	45
80	22.5	0.169	0.15	28	37.5	0.164	0.15	0.122	33
100	18	0.135	0.12	22	30	0.128	0.12	0.098	27

SPEED REDUCERS



RATIO To 1	900 R.P.M. (INPUT)				600 R.P.M. (INPUT)			
	R.P.M. Output Shaft	Max. Input H.P.	Output H.P.	Output Torque In. Lbs.	R.P.M. Output Shaft	Max. Input H.P.	Output H.P.	Output Torque In. Lbs.
5-1/6	177	2	1.7	614	500	2.62	2.375	2.04
10	90	1.4	1.15	805	475	1.312	1.187	1.02
15	60	1.12	0.96	905	490	0.875	0.8	0.68
20	45	0.875	0.765	905	475	0.656	0.6	0.51
25	36	0.712	0.645	1127	415	0.525	0.48	0.408
30	30	0.6	0.54	985	460	0.425	0.4	0.336
40	22.5	0.48	0.435	780	535	0.319	0.3	0.252
50	18	0.4	0.36	978	470	0.256	0.24	0.196
60	15	0.36	0.324	947	500	0.213	0.2	0.163
80	11.25	0.27	0.243	806	520	0.164	0.15	0.122
100	9	0.24	0.216	790	535	0.128	0.12	0.098